



Skype™ Installation Instructions:

If your operating system is older than Windows XP, make sure that your Operating system includes Direct X9.0 or higher. You can download this updates free of charge from Microsoft.

Step 1:

Go to the www.skype.com/download, then sign-up for an account.

Step 2:

Download and install [Eutectics SKYPE™ integration software](#).

Step 3:

Plug in the Eutectics IPP Phone to the PC and let it install itself. If you are prompted for the location of the drivers, enter **"C:\program files\eutectics\SKYPESoftphone-IPP200"** as the file path. You may not be prompted.

Note: After the install when you restart your PC you will see a Skype™ Authorization screen that looks like this:



Choose the option: **Allow this program to use Skype™** – if you do not then the Eutectics integration will be disabled.

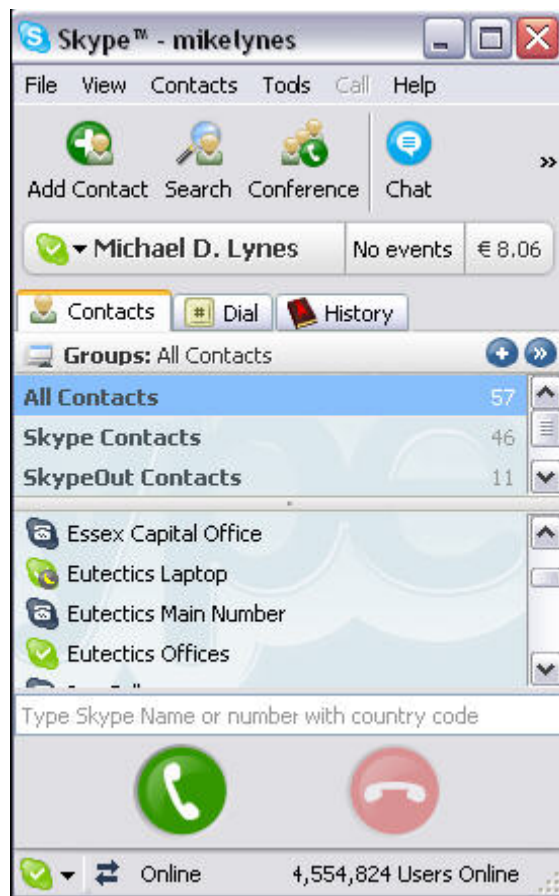
Using the IPP Phone

1 – Calling Another Skype User (FREE)

1. You just take the IPP phone off hook – the Skype client will pop up as shown below.

2. Select the name of the user from the Contacts List (the user should be on line as in the example below it is **Eutectics office**). You may select the contact using your pc Key board or your mouse, or using the scroll feature (depends on your IPP Phone model).

3. You can call by double-clicking on the contact you selected or click the GREEN phone ICON. Then the process will be the same like a regular phone call.



2 – Calling a LandLines or Cell Phone:

1. To make a call using the [SkypeOut](#) service just go off hook and dial using the PC keyboard or the IPP phone keypad (depends on your IPP Phone Model)

HINT: If you want to; you can select the DIAL page on your Skype™ client – but you do not have to.



2. The Skype client menu will pop up, the Dial window at the bottom of the menu will be highlighted.
3. If the number you calling is already stored in your Skype contact. You highlight it and click on the green Icon to start the call.
4. If the number is not stored and if you have an IPP phone with a keypad (IPP400, IPP520, IPP2000 or IPP700) you may dial the number directly. otherwise, use the numbers on your PC keyboard to make the call.
5. As you dial the first number the (+) sign will automatically be placed into the dial window.
6. Once you have finished dialing you can select the 'POUND' (#) key on the IPP phone or the ENTER key on your keyboard to start the call. This is like the CALL key on your cell phone – it lets the phone know that you are ready to place the call. Please ensure that the enter key is configured to start a call (versus select a contact) in the Skype configuration.

Answering a Call

If you have [SkypeIn](#) (and some one is calling you from a regular phone), or If another SKYPE™ user is calling you, you will hear a RING from your PC speakers or Your IPP Phone (depends on your IPP phone model) and you will see the indication on the SKYPE™ client as below.



To answer the call, simply lifts the handset from the cradle. The call is automatically answered and you will be talking with the person who called you.

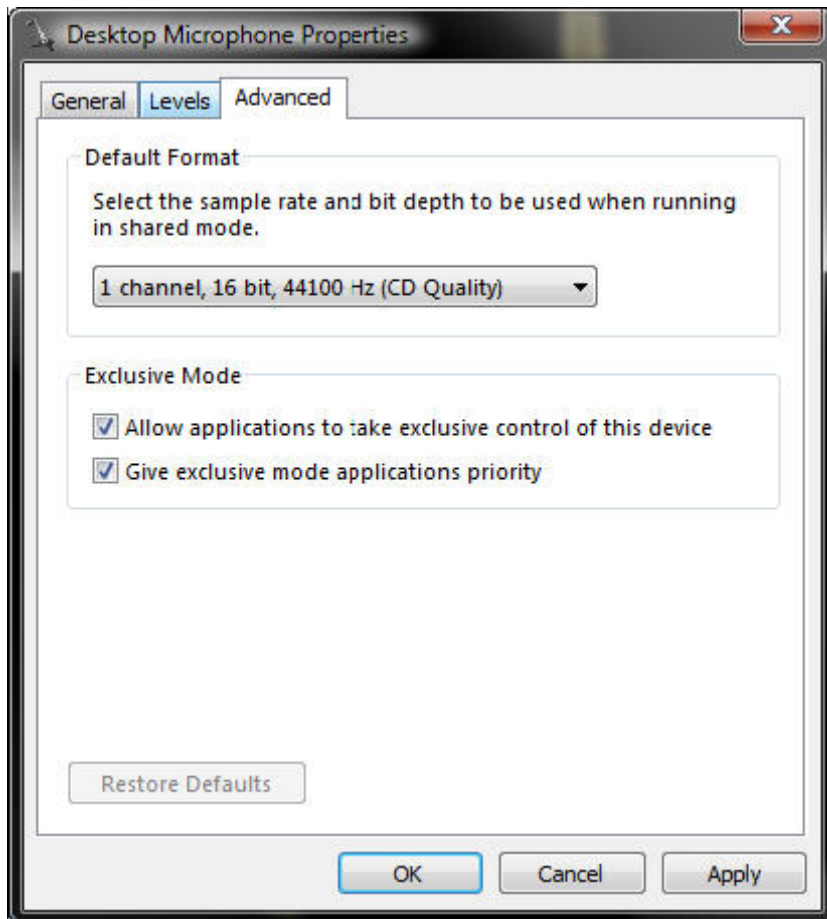
You will see the SKYPE™-ID of the person calling you if you have a Eutectics Phone with caller id such as the IPP700 or if you are using a caller id enabled phone with the Eutectics IPP2000 telephone adapter.

Vista or Windows 7 Users

Windows Vista has some additional settings required for proper operation of the Eutectics Devices.

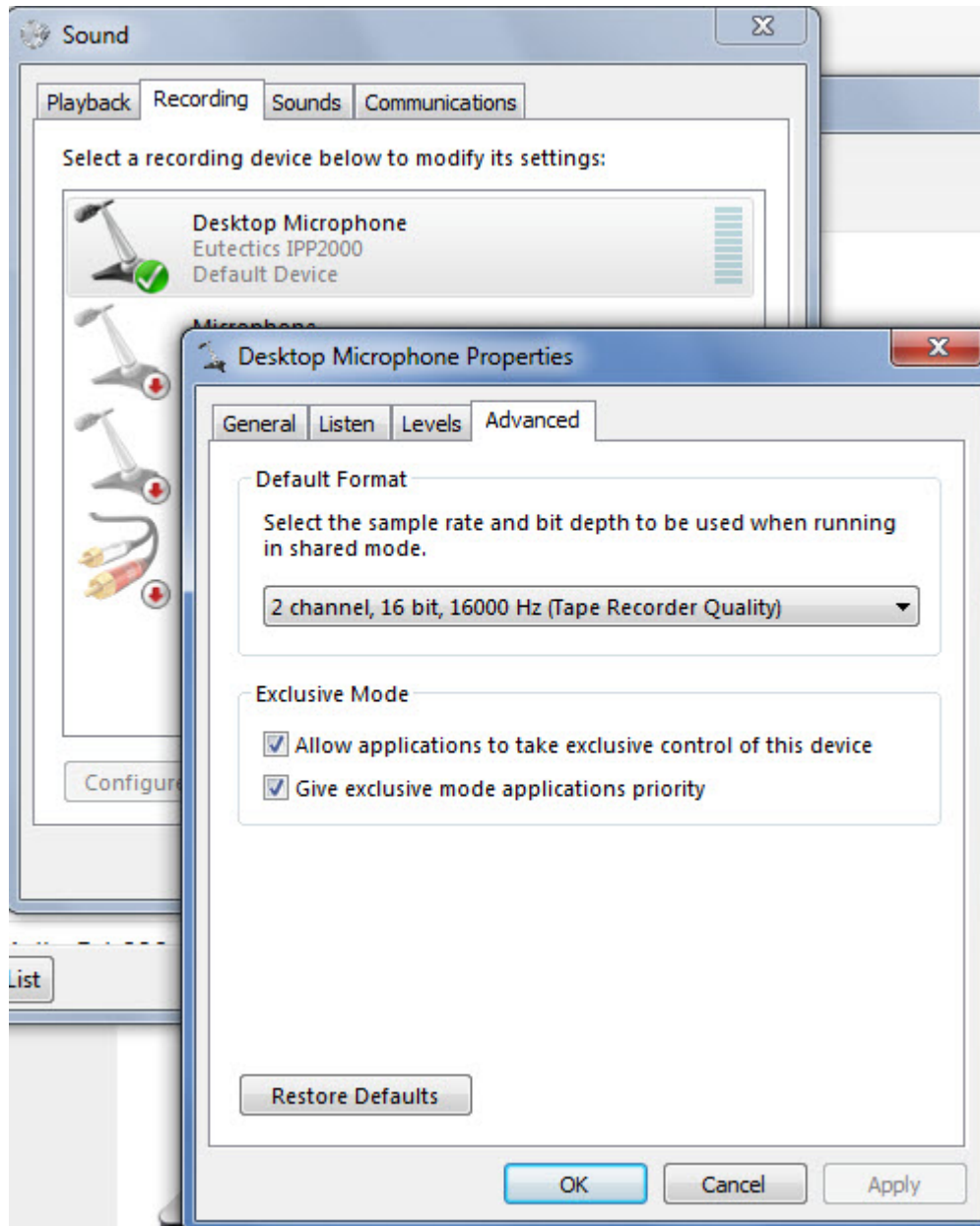
The microphone device must be configured as default STEREO capture mode.

Using the dialog below – please select the Default Format as **2 channel, 16 bit** in shared mode.

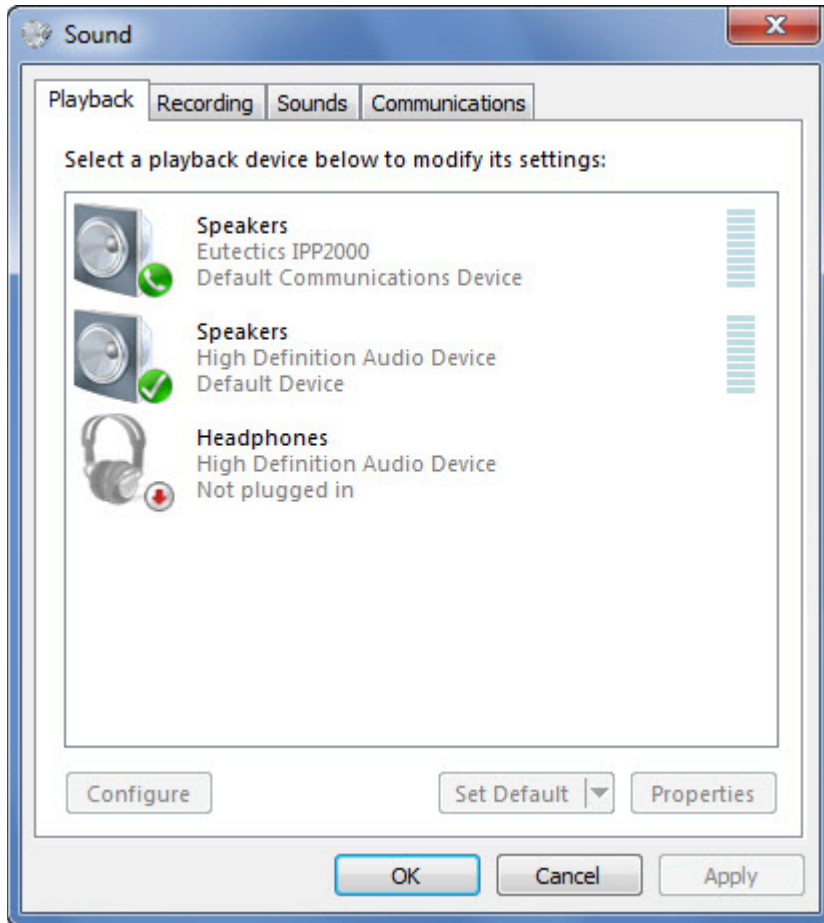


This setting is important to ensure proper operation of the integration on Windows Vista or Windows 7.

Windows 7 Microphone Properties:



Also the Setting of the IPP device as the Default Communications device should be verified as shown below:

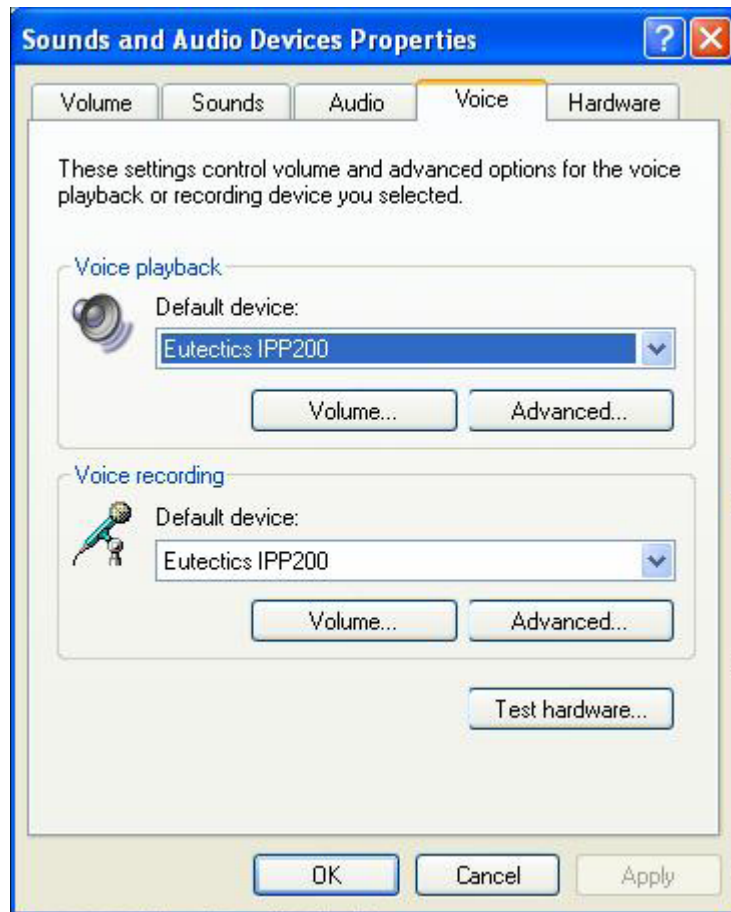


Important Tips:

1. **SkypeOut** will allow you to make calls from anywhere in the world to any regular phone in your country of origin, as if you making a local call.
2. **SkypeIn** will allow you to receive calls any where in the world from your country of origin, at the same time your caller can use landline or cell phone and your caller cost will be the same as a local call.
3. **If you are having trouble hearing the called party or they are having trouble hearing you;** You can check the Sound Levels using the following procedure:
 - Select the SPEAKER icon from the system Tray (right hand corner) and RIGHT CLICK the mouse button on it. You may also select the SPEAKER icon from the Control Panel window.
 - Choose Adjust Audio Properties - the following dialog will appear.



- In the Audio tab - choose the SOUND CARD device as the PLAYBACK (so your normal PC sounds will come from the Speakers of the PC)
- Also check the **Use Only Default Devices** box in the lower left corner.



- In the Voice tab choose the Eutectics Device (IPP200 in the above example) as the Playback and Recording - also click on the Volume Button and adjust the master volume to the highest level (you can make it lower later if desired).
- The Sound Levels adjustment is complete – you can close the dialog. You should now have no problem hearing the other party or vice versa.

