

## MSN Phone Installation Instructions:

### Step 1:

Download and install the *correct* version of MSN Messenger. For Windows XP users this can be found at: <http://messenger.msn.com>. For Windows 2000, Windows ME or Windows 98 users please use this link

<http://download.microsoft.com/download/msnmessenger/Utility/4.6.0082/WIN98MeXP/EN-US/mmssetup.exe>. You will need a (free) Hotmail account to do this.

### Step 2:

Download and install Eutectics MSN Messenger integration software. Follow this link [http://www.eutecticsinc.com/download/DISK1/IP200\\_MSNPhone.htm](http://www.eutecticsinc.com/download/DISK1/IP200_MSNPhone.htm) to install the software.

### Step 3:

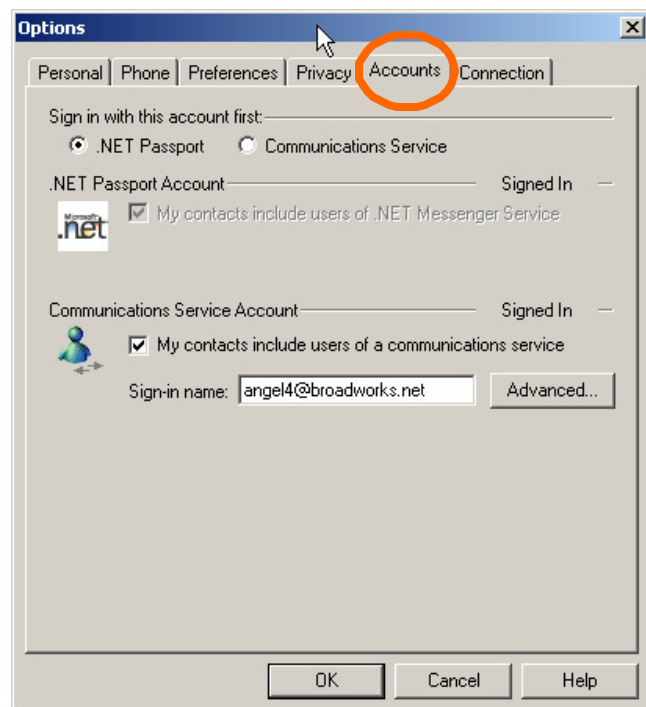
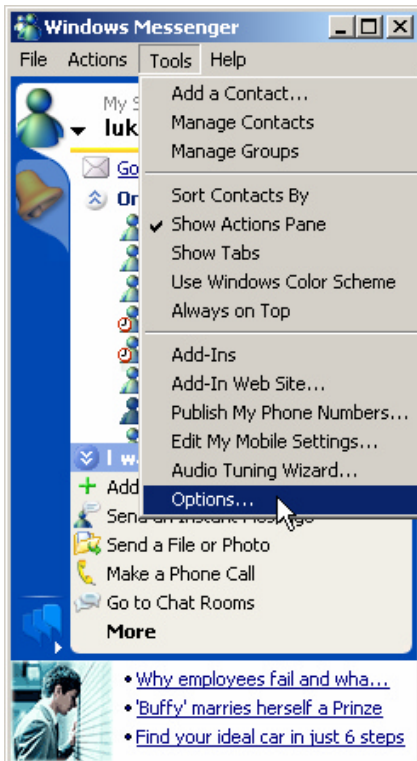
Plug in the Eutectics Phone to the PC and let it install itself. When you are prompted for the location of the drivers, enter "c:\programs files\eutectics\ipp200 " as the file path.

### Step 4:

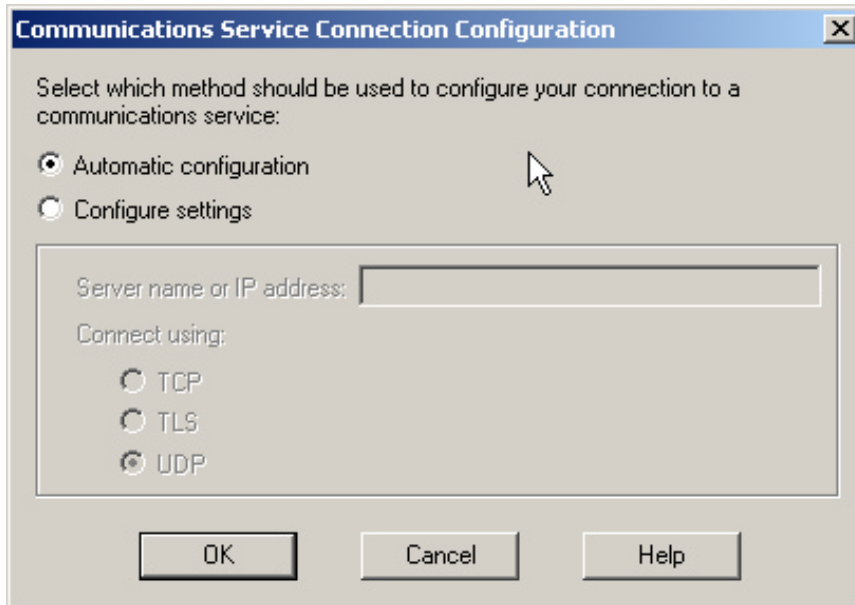
Configure the MSN Messenger account to use this test account. First open up MSN Messenger by clicking on the MSN icon in the system tray (right bottom of screen)



1. Open the Windows Messenger window, select "**Tools**" then "**Options**" (see figures below)
2. On the "**Accounts**" tab, set the MSN Communications Service Account to: **<YourPhoneNumber>@everestbnn.com** remember to substitute your phone number where indicated.
3. Go into the "**Advanced**" settings,
4. Select "**Configure Settings**" - Type in the IP address of the Server in the box shown. Select **UDP** from the Connect Using options.



**Step 5:** Sign out of MSN and Sign back in to activate your new account.



When your PC comes back up, it will automatically log you in using your account information from the server. If your login fails for any reason then repeat steps 2 thru 5. Your MSN Phone will be ready to use!

The PSTN phone number for your Phone is: The same as the one you entered in the first part of your Account Name. Anyone can call this number and it will ring on your PC phone.

## Using the Phone

### The First Time

The first time that the receiver is lifted, the Audio Tuning Wizard will be started automatically. This happens once per login to MSN Messenger. Follow the instructions to initialize the audio levels on the Phone. Once the Audio Tuning Wizard has been run you may hang up to close the Wizard.

### Originating a call: lift the receiver

- **Phone:** Lifting the Phone receiver will bring up the Phone client and a dial tone on the phone. At this point a phone number may be dialed either by using the keys on the soft Phone or typing on the keyboard. The dial tone will stop once the cursor is placed in the dialed number window. Typing digits will also cause the dial tone to stop. DTMF feedback will be heard as the numbers are typed. After entering the number you will need to hit the “enter” key or click “dial” on the screen. Please note that the status of your system icon changes to “busy” as long as the phone is off the hook.
- **IM (Instant Messenger) Session:** If you are using MSN Messenger and have a chat session active, lifting the Phone’s receiver will invite your buddy to a talk session. Placing the phone back on the hanger will close the talk session and the associated window.



## Receiving a call: pick up the receiver

- **Phone:** A "slice of toast" will pop up from your system tray to indicate an incoming PSTN call. PC (CPU speaker) will RING on to indicate an incoming PSTN call. The ringing stops once the call is accepted by lifting the receiver. If you ignore the ring the call will automatically be dropped or will go to voicemail (if setup has been completed).



- **IM Session:** If you are **in an active IM session**, a talk invitation will pop up in your active window and the PC will **not ring**. If a buddy with whom you are NOT actively in a chat session invites you to a talk session, the PC will ring as if a PSTN call is coming in.

Hanging up the phone will disconnect the call or talk session. If the call originated from an active chat session, the chat window will remain open.

## Trouble shooting:

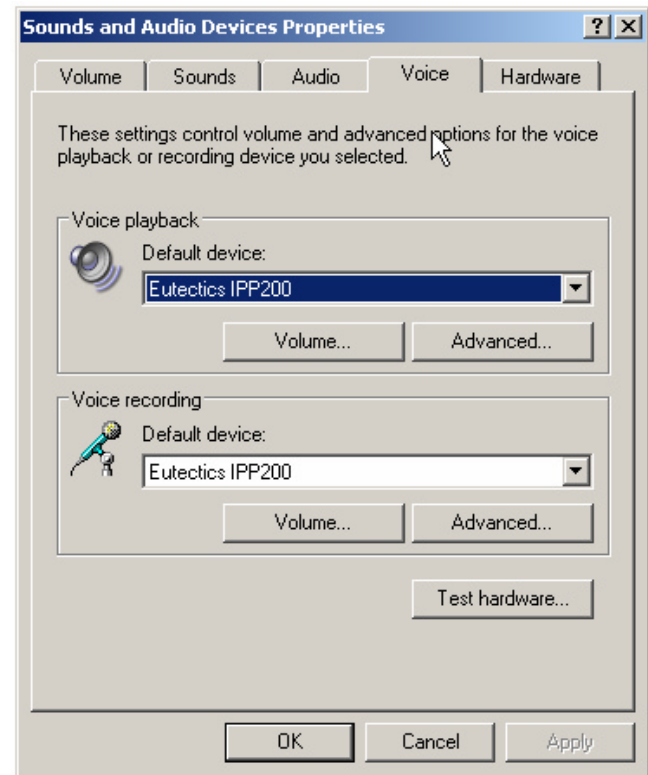
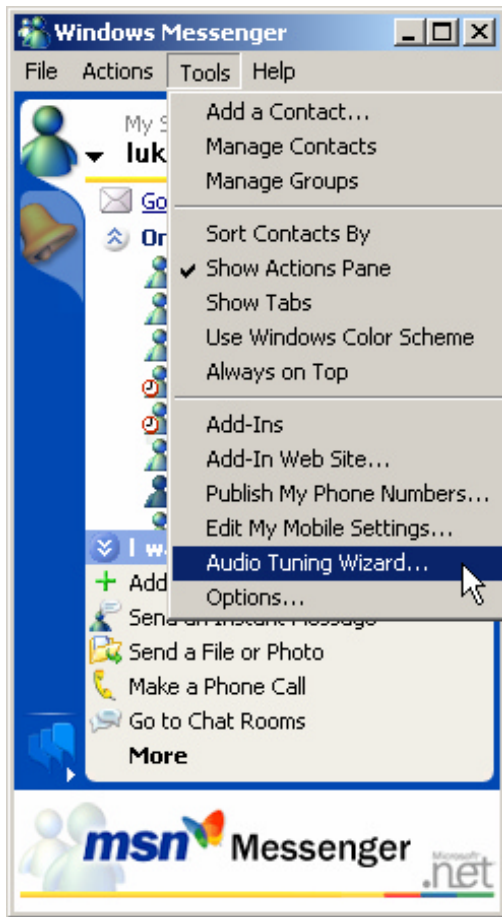
**No Audio in the Phone:** Run the audio tuning wizard. Check the PC audio settings. Restart PC if necessary

**MSN is unable to sign itself in:** Check your internet connection by opening a browser window.

**PC does not respond:** Restart your PC

Audio tuning wizard:

Check PC audio settings by "right clicking" the speaker in the system tray





If problems persist please feel free to contact us at any time.

**Eutectics Inc.**

Ask for Michael Lynes or Lukas van der Kroft

Phone: +1 973 227 4051

Or by email: [info@eutecticsinc.com](mailto:info@eutecticsinc.com)

## **Passwords**

### **1. Basic account use and Authentication:**

Your Account Name is the only thing you are required to enter. You must also have your phone which will only authenticate with your account. Your User Name and Password are generated each time you login automatically by the server.

### **2. Voice Mail:**

Voicemail needs to be activated in the online service management pages. Once set up, it can be accessed by dialing **your own phone number** and upon answer hit \* 0000.